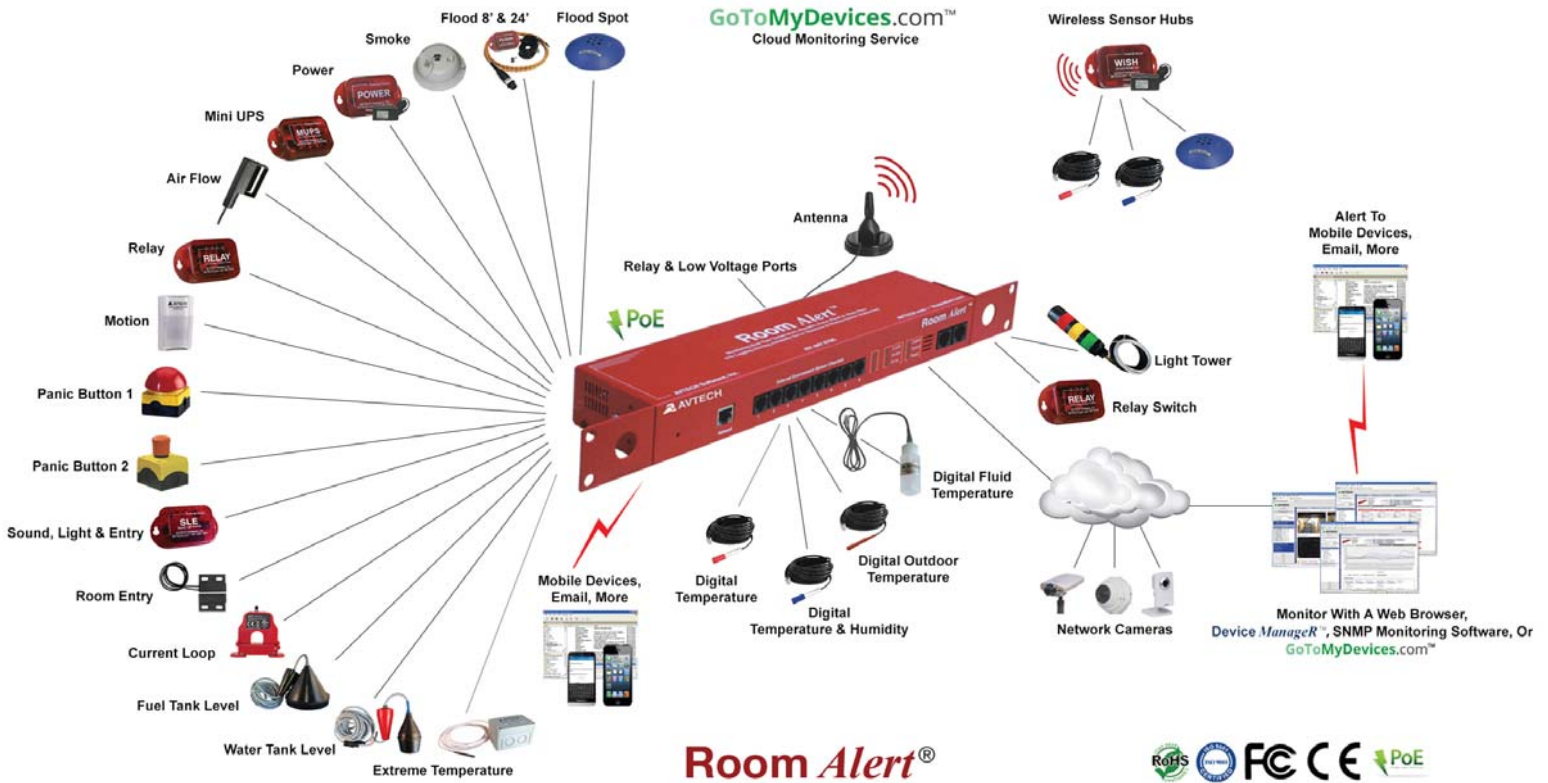


Protect Your Facility...

Don't Wait Until It's Too Late!™



Room Alert®



Install Room Alert® Monitors

The Most Advanced, Easy-To-Use, Reliable & Affordable Monitors Available To...

MONITOR, ALERT... LOG, GRAPH... VIEW, REPORT... MAP, MANAGE & PROTECT...

- Digital Temperature
- Digital Outdoor Temperature
- Digital Fluid Temperature
- Digital Humidity
- Main / UPS Power
- Flood / Water Leakage
- Power Current (Amperage)
- Extreme High / Low Temperature
- Heat Index (Feels Like)
- Smoke / Fire
- Fuel / Water Tank Level
- Air Flow, Sound, Light
- Motion, Room Entry
- Panic Button, Security
- Light Towers, Relay Switches
- Wireless Sensor Hubs
- Network Cameras
- Analog Power & Temp Sensors
- Switch Sensors
- Dry Contacts
- Low Voltage Sensors

In This Catalog

Sample Room Alert Layout.....	Front Cover
About AVTECH.....	2
Room Alert: Advanced IT & Facilities Environment Monitoring, Alerting & More.....	3
Room Alert 32W Overview.....	4
Room Alert 32E Overview.....	5
Room Alert 12E / 12ER Overview.....	5
Room Alert 4E / 4ER Overview.....	6
Room Alert 3E Overview.....	6
Room Alert 3 Wi-Fi Overview.....	6
6 Reasons To Monitor IT & Facility Environments.....	7
Sensors, Wireless Hubs, Modems & Accessories.....	8-11
How to Purchase AVTECH Products.....	Back Cover
Extended Service & Support.....	Back Cover
AVTECH Contact Information, Trademarks, Privacy Policy, Current Versions & More.....	Back Cover

About AVTECH

AVTECH Software (AVTECH), a private corporation founded in 1988, is a computer hardware and software developer and manufacturer. Our **Room Alert**® products monitor computer rooms, data centers and other facilities for conditions such as temperature, humidity, power, flood / water, smoke / fire, air flow, room entry, motion, cameras and more. Alerting, logging and graphing are standard for all models. Automatic corrective actions resolve issues for a lights out response, allowing ‘Disaster Prevention’ instead of ‘Disaster Recovery’. **Device Manager**™ is AVTECH’s ‘IT & Facilities Environment Monitoring’ software. Device Manager runs as a Windows Service and will automatically discover units across the network, log and graph sensor data, alert users when environmental events occur or thresholds are passed, and allows reporting, auto response, and much more. AVTECH’s **GoToMyDevices**™ (GoToMyDevices.com) monitoring platform provides extended service, many support benefits, and allows users to monitor and manage Room Alert devices and sensors through the cloud.

AVTECH has hundreds of thousands of end users located in 181 countries, including organizations in every industry and on every continent. AVTECH products are heavily used by the Fortune 1000, U.S. Government, U.S. Military, United Nations, technology, medical, education, cold storage, businesses of all types and sizes, and many others.

AVTECH products are ‘Made In The U.S.A.’ since 1988 and available worldwide from professional IT and facilities resellers, online at EnvironmentMonitor.com or directly from AVTECH. To learn about AVTECH products or request a reseller in your country, visit us online at AVTECH.com or call **888.220.6700 / 401.628.1600**.



Follow Us:



Shop Online at EnvironmentMonitor.com

Advanced IT & Facilities Environment Monitoring, Alerting & More...



Room Alert® is a complete solution for easy remote monitoring of the environmental conditions in IT and other valuable facilities, from anywhere on the network or around the world. Room Alert is perfect for environments such as telecom closets, critical rack cabinets, large computer rooms or data centers, cold storage facilities, hospitals, restaurants, warehouses, educational facilities, museums, multi-building plants and facilities of all types and sizes. Room Alert connects via Ethernet to the network and does not require a host PC for operation. Room Alert helps protect important assets to minimize downtime and reduce losses when conditions change or a disaster occurs. Use the built-in web server, **Device ManageR**™ software, **GoToMyDevices**™ cloud service, or an SNMP application to monitor Room Alert devices network-wide.

Monitor Critical Environmental Conditions To Protect Equipment & Avoid Downtime...

- ✓ Temperature
- ✓ Power
- ✓ Humidity
- ✓ Flood / Water
- ✓ Smoke / Fire
- ✓ Room Entry
- ✓ Air Flow
- ✓ Motion
- ✓ Dry Contacts
- ✓ Much More...

Be The First To Know When Issues Occur With Advanced Alerting...

All Room Alert packages allow users to set up multi-method alert notifications in response to issues or events across the network or around the world. Alert notifications can be sent via email, email-to-SMS, SNMP, web page update and more, and communicate to devices such as computers, tablets, mobile phones and other mobile devices. The number of alert notifications are unlimited and can be scheduled to alert individuals, groups and hierarchies; different people for different devices, events, locations, etc.



Monitor, Alert, Log, Graph, Map, Report, Respond & Protect... Includes Automatic Server Shut Down, Corrective Actions & More

AVTECH's **Device ManageR** software is bundled with Room Alert at no additional cost, adding important benefits and ease-of-use above and beyond similar products. Device ManageR is designed as an all-in-one tool for the discovery, management, monitoring, alerting, logging, graphing, reporting, automatic corrective action and more of Room Alert monitors and Axis IP cameras. It runs as a Windows Service to provide greater security and is accessed through a powerful, easy-to-use web browser interface.

AVTECH's powerful **GoToMyDevices** portal provides extended services such as cloud monitoring, technical support, downloads and much more. GoToMyDevices makes it easy to monitor temperature and environmental conditions from anywhere, at any time, through the cloud using your web browser. Enjoy the same user interface from any device. Powerful monitoring, alerting, logging, graphing, reporting, mapping and more have many users calling it the 'Best of Breed'.

 **Visit AVTECH Online Or Call Us Today To Learn More!**

Room Alert 32W (RA32W)



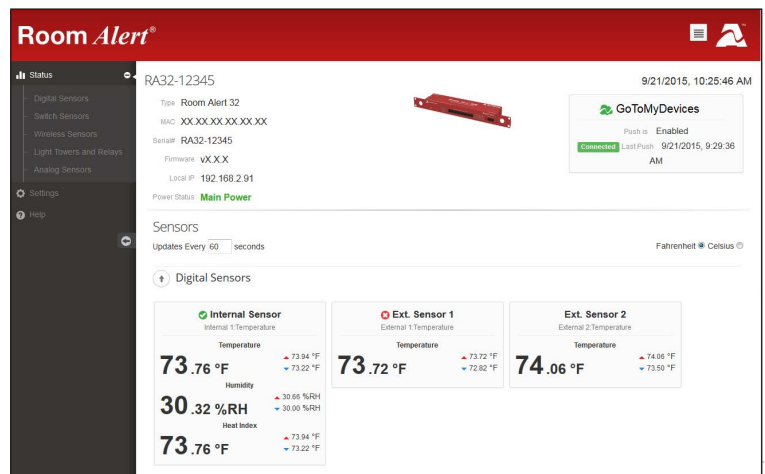
- Can accommodate **80+ sensors** with Digital Temperature, Digital Humidity & Main Power sensors built-in.
- Includes a built-in UPS, Power over Ethernet (PoE), Powered Wireless Sensor Hub (WiSH), external Digital Temperature Sensor, external Room Entry Sensor, Factory Reset Button, On/Off Button, 2 External Relay Output Ports, 2 Light Tower & Relay Adapter Connection Ports & 2 0-5VDC Analog Sensor Ports.
- Use Room Alert 32W's built-in web server, bundled Device Manager software, GoToMyDevices cloud service, or any SNMP application to monitor unlimited units across your network.
- Room Alert 32W allows real-time monitoring, advanced alerting by email/email-to-SMS/SNMP and more, Fahrenheit/Celsius, high/low watermarks, PUSH technology, logging/graphing software, shutdown, reboot and log off capabilities & much more.
- Operate Room Alert 32W with or without a host system. That's right... *No PC Required!*



\$1095
RA32W-WS1-RAS

INCLUDES: Room Alert 32W Rack Unit (1U 19"), built-in Digital Temperature Sensor, built-in Digital Humidity Sensor, built-in Main Power Sensor, external Digital Temperature Sensor, external Room Entry Sensor, 8 external Digital Sensor Ports (RJ-11), 16 Switch Sensor Channels, Power On/Off Button, Factory Reset Button, 10 Wireless Sensor Hub capacity, Power Over Ethernet (PoE), LED Sensor Status & Wireless Strength indicators, WiSH Activity indicators, built-in Uninterruptible Power Supply (UPS), Wireless Sensor Hub (Powered), rotating mounting wings, PUSH technology, Ethernet Connection (RJ-45), 2 External Light Tower or Relay Switch Sensor Connection Ports, 2 External Relay Output Ports (0.3A@125VAC / 1A@24VDC), 2 0-5VDC Analog Sensor Input Ports, External Antenna with 13' Cable, 10' Ethernet cable, 5V Power Adapter (110/240V, RoHS), built-in web server, SNMP Trap & Query enabled, SNMP MIB, bundled Device Manager software license, PDF *Room Alert User's Guide & Reference Manual*, 1 year Personal subscription to GoToMyDevices or 90 Day Professional Upgrade (if existing customer), '30-Day Satisfaction Guarantee'. Optional sensors, Light Tower & Relay Adapters (LTAs), Light Towers or Relays Switch Sensors, voice or GSM modem & GoToMyDevices upgrades available.

Room Alert 32W is AVTECH's most advanced hardware solution for "Computer Room Environment Monitoring, Alerting & Automatic Corrective Action with a built-in UPS & Wireless Sensor Hub Monitoring". It is designed specifically to assist with monitoring computer room temperature, humidity, power and much more in multiple locations while utilizing wireless technology to avoid running cables. Room Alert 32W's Wireless Sensor Hub (WiSH) and Wireless Sensor Hub & Powered Relay (WiSPR) communicate via a secure, private ZigBee protocol, allowing users the ability to monitor large numbers of sensors both indoors and out. Room Alert 32W allows direct connection of 8 digital sensors and 16 switch sensors, 10 WiSH or WiSPR units, and use of 2 Light Towers or Relay Switch Sensors, 2 analog sensors, 2 Relays and more. **Room Alert 32W is the most advanced product of its type and an extreme value allowing up to 80+ sensors!**



Sample Room Alert 32W web browser interface. **This model allows use of 80+ sensors, with 40 via wireless connection.** Advanced monitoring features are available by using AVTECH's Device Manager software, included FREE. Customize your use with 'Plugins' for special functions by upgrading to the Professional or Enterprise edition of GoToMyDevices.

Wireless Sensor Hub Options For Use With Room Alert 32W & 26W...

\$125
BEST SELLER



RAW-PWSH-HUB

Wireless Sensor Hub (Powered)

- Internal Digital Temperature Sensor.
- Temperature range: -67 – 257° F, -55 – 125° C.
- 2 digital ports, 1 switch sensor channel.
- Max wireless distance from Room Alert or a WiSPR is **200'** in ideal conditions.
- Max 10 WiSH / WiSPR hubs per Room Alert.
- Compatible with Room Alert 32W & 26W only.

INCLUDES: Wireless Sensor Hub, 5V Power Adapter & Installation Note. Max Range Approximately 250'.

\$145
MAX RANGE



RAW-WSPR-HUB

Wireless Sensor Hub & Alert Relay

- Internal Digital Temperature Sensor.
- Temperature range: -67 – 257° F, -55 – 125° C.
- 2 digital ports, 1 switch sensor channel.
- Powered Alert Relay technology built-in.
- Max wireless distance from Room Alert or another WiSPR is **300'** in ideal conditions.
- Max 10 WiSH / WiSPR hubs per Room Alert.
- Compatible with Room Alert 32W & 26W only.

INCLUDES: Wireless Sensor Hub & Alert Relay, 5V Adapter & Installation Note. Max Range Approximately 350'.

Room Alert 32E (RA32E)



- Can accommodate **32+** sensors with Digital Temperature, Digital Humidity & Main Power sensors built-in.
- Includes a built-in UPS, Power over Ethernet (PoE), external Digital Temperature Sensor, external Room Entry Sensor, Factory Reset Button, On/Off Button, 2 External Relay Output Ports, 2 Light Tower & Relay Adapter Connection Ports & 2 0-5VDC Analog Sensor Ports.
- Use Room Alert 32E's built-in web server, bundled Device Manager software, GoToMyDevices cloud service, or any SNMP application to monitor unlimited units across your network.
- Room Alert 32E allows real-time monitoring, advanced alerting by email/email-to-SMS/SNMP and more, Fahrenheit/Celsius, high/low watermarks, PUSH technology, logging/graphing software, shutdown, reboot and log off capabilities & much more.
- Operate Room Alert 32E with or without a host system. That's right... *No PC Required!*



\$895

RA32E-TH1-RAS

INCLUDES: Room Alert 32E Rack Unit (1U 19"), built-in Digital Temperature Sensor, built-in Digital Humidity Sensor, built-in Main Power Sensor, external Digital Temperature Sensor, external Room Entry Sensor, 8 external Digital Sensor Ports (RJ-11), 16 Switch Sensor Channels, Power On/Off Button, Factory Reset Button, Power Over Ethernet (PoE), LED Sensor Status indicators, built-in Uninterruptible Power Supply (UPS), rotating mounting wings, PUSH technology, Ethernet Connection (RJ-45), 2 External Light Tower or Relay Switch Sensor Connection Ports, 2 External Relay Output Ports (0.3A@125VAC / 1A@24VDC), 2 0-5VDC Analog Sensor Input Ports, 10' Ethernet cable, 5V Power Adapter (110/240V, RoHS), built-in web server, SNMP Trap & Query enabled, SNMP MIB, bundled Device Manager software license, PDF Room Alert User's Guide & Reference Manual, 1 year Personal subscription to GoToMyDevices or 90 Day Professional Upgrade (if existing customer), '30-Day Satisfaction Guarantee'. Optional sensors, Light Tower Adapters (LTAs), Light Towers or Relay Switch Sensors, voice or GSM modem & GoToMyDevices upgrades available.

Room Alert 12E (RA12ER & RA12E)



- Can accommodate **11+** sensors with a Digital Temperature Sensor built-in.
- Includes Power over Ethernet (PoE), external Digital Temperature Sensor, external Power Sensor, Factory Reset Button, External Relay Output Port, Light Tower & Relay Adapter Connection Port, and 0-5VDC Analog Sensor Port.
- Use Room Alert 12E's built-in web server, bundled Device Manager software, GoToMyDevices cloud service, or any SNMP application to monitor unlimited units across your network.
- Room Alert 12E allows real-time monitoring, advanced alerting by email/email-to-SMS/SNMP and more, Fahrenheit/Celsius, high/low watermarks, PUSH technology, logging/graphing software, shutdown, reboot and log off capabilities & much more.
- Operate Room Alert 12E with or without a host system. That's right... *No PC Required!*



\$595 / \$575


RA12E-TH1-RAS (Rack Mount)
RA12E-TH1-WAS (Standard)

INCLUDES: Room Alert 12E monitor, built-in Digital Temperature Sensor, external Digital Temperature Sensor, external Power Sensor, 3 Digital Sensor Ports (RJ-11), 4 Switch Sensor Channels, Factory Reset Button, Power Over Ethernet (PoE), PUSH technology, Ethernet Connection (RJ-45), Light Tower & Relay Adapter Connection Port, Relay Output Port (0.3A@125VAC / 1A@24VDC), 0-5VDC Analog Sensor Input Port, 10' Ethernet cable, 5V Power Adapter (110/240V, RoHS), built-in web server, SNMP Trap & Query enabled, SNMP MIB, bundled Device Manager software license, PDF Room Alert User's Guide & Reference Manual, 1 year Personal subscription to GoToMyDevices or 90 Day Professional Upgrade (if existing customer), '30-Day Satisfaction Guarantee'. Optional rack mount bracket, sensors, Light Tower & Relay Adapter (LTA), Light Tower or Relay Switch Sensor, voice or GSM modem & GoToMyDevices upgrades available.

Consider Adding More Of Our Most Popular Sensors To Maximize Protection...

\$40 BEST SELLER

Digital Temperature Sensor



- Real-time temperature sensor.
- Temperature range: -67 – 257° F, -55 – 125° C.
- Compatible with Room Alert 32E/W, 26E/W, 24E, 12E, 11E, 7E, 4E, 3E, TemPageR 4E & 3E, WiSH & WiSPR.
- Options include sensor with attached cables of 25', 50' and 100' length. Max cable distance is 100'.

TMP-SDT-SEN (\$40)
TMP-DT50-SEN (\$55)
TMP-DT100-SEN (\$80)

INCLUDES: Digital Temperature Sensor With 25' RJ-11 Cable & Installation Note.

\$90 BEST SELLER

Digital Temperature & Humidity Sensor



- Real-time temperature and humidity sensor.
- Temperature range: -67 – 257° F, -55 – 125° C.
- Relative humidity range: 5 to 95% non-condensing.
- Compatible with Room Alert 32E/W, 26E/W, 24E, 12E, 11E, 4E, 3E, WiSH & WiSPR.
- Options include sensor with attached cables of 25', 50' and 100' length. Max cable distance is 100'.

RMA-DTH-SEN (\$90)
RMA-DTH50-SEN (\$105)
RMA-DTH100-SEN (\$130)

INCLUDES: Digital Temperature & Humidity Sensor With 25' RJ-11 Cable & Installation Note.

Room Alert 4E (RA4ER & RA4E)



- Can accommodate **4+ sensors** and a Light Tower or Relay Switch Sensor. Built-in Digital Temperature Sensor.
- Includes 1 external Digital Temperature Sensor, 2 Digital Sensor Ports, 1 Switch Sensor Channel, 1 Light Tower or Relay Switch Sensor Port.
- Use Room Alert 4E's built-in web server, bundled Device ManageR software, GoToMyDevices cloud service, or any SNMP application to monitor unlimited units across your network.
- Room Alert 4E allows real-time monitoring, advanced alerting by email/email-to-SMS/SNMP and more, Fahrenheit/Celsius, high/low watermarks, PUSH technology, logging/graphing software, shutdown, reboot and log off capabilities & much more.
- Operate Room Alert 4E with or without a host system. That's right... *No PC Required!*



\$395 / \$375

RA4E-ES1-RAS (Rack Mount)
RA4E-ES1-WAS (Standard)

INCLUDES: Room Alert 4E, built-in Digital Temperature Sensor, external Digital Temperature Sensor, 2 Digital Sensor Ports (RJ-11), 1 Switch Sensor Channel, PUSH technology, Ethernet Connection (RJ-45), Light Tower Expansion Port, 10' Ethernet cable, 5V Power Adapter (110/240V, RoHS), built-in web server, SNMP Trap & Query enabled, SNMP MIB, bundled Device ManageR software license, PDF Room Alert User's Guide & Reference Manual, 1 year Personal subscription to GoToMyDevices or 90 Day Professional Upgrade (if existing customer), '30-Day Satisfaction Guarantee'. Optional rack mount bracket, sensors, Light Tower or Relay Switch Sensor, voice or GSM modem & GoToMyDevices upgrades available.

Room Alert 3E (RA3E)



- Can accommodate **3+ sensors**. Built-in Digital Temperature Sensor.
- Includes 1 Digital Sensor Port, a Switch Sensor Channel, and a Light Tower & Relay Adapter can be optionally connected through the Digital Sensor Port to support a Light Tower or Relay Switch Sensor.
- Use Room Alert 3E's built-in web server, bundled Device ManageR software, GoToMyDevices cloud service, or any SNMP application to monitor unlimited units across your network.
- Room Alert 3E allows real-time monitoring, advanced alerting by email/email-to-SMS/SNMP and more, Fahrenheit/Celsius, high/low watermarks, PUSH technology, logging/graphing software, shutdown, reboot and log off capabilities & much more.
- Operate Room Alert 3E with or without a host system. That's right... *No PC Required!*



\$175
RA3E-ESO-BAS

INCLUDES: Room Alert 3E ID Box (0U, 3-5/8" L x 1-3/4" W x 1" H), built-in Digital Temperature Sensor, 1 external Digital Sensor Port (RJ-11), 1 Switch Sensor Channel, Factory Reset Button, Power over Ethernet (PoE), PUSH technology, Ethernet Connection (RJ-45), 10' Ethernet cable, 5V Power Adapter (110/240 V, RoHS), built-in web server, SNMP Trap & Query enabled, SNMP MIB, bundled Device ManageR software license, PDF Room Alert User's Guide & Reference Manual, 1 year Personal subscription to GoToMyDevices or 90 Day Professional Upgrade (if existing customer), '30-Day Satisfaction Guarantee'. Optional sensors, Light Tower & Relay Adapter, Light Tower or Relay Switch Sensor, voice or GSM modem & GoToMyDevices upgrades available.

Room Alert 3 Wi-Fi (RA3W)



- Can accommodate **3+ sensors**. Built-in Digital Temperature Sensor.
- Includes 1 Digital Sensor Port and 1 Switch Sensor Channel.
- Use Room Alert 3 Wi-Fi's bundled Device ManageR software, or GoToMyDevices cloud service to monitor unlimited units across your network.
- Room Alert 3 Wi-Fi allows real-time monitoring, advanced alerting by email/email-to-SMS and more, Fahrenheit/Celsius, high/low watermarks, PUSH technology, logging/graphing software, shutdown, reboot and log off capabilities & much more.
- IEEE 802.11 b/g and IEEE 802.11n (single stream) WLAN interface (2.4 GHz only); IEEE 802.11 d/h/i/j/k/w/r; IEEE 802.11i Support - WPA-Personal, WPA2-Personal, WEP (client only).
- Designed specifically to integrate easily with GoToMyDevices for logging and alerting.
- Operate Room Alert 3 Wi-Fi with or without a host system. That's right... *No PC Required!*



\$145
RA3W-ES0-BAS

INCLUDES: Room Alert 3 Wi-Fi ID Box (0U, 3-5/8" L x 1-3/4" W x 1" H), built-in Digital Temperature Sensor, 1 external Digital Sensor Port (RJ-11), 1 Switch Sensor Channel, Factory Reset Button, Wi-Fi capabilities, PUSH technology, 5V Power Adapter (110/240 V, RoHS), bundled Device ManageR software license, PDF Room Alert 3 Wi-Fi User's Guide & Reference Manual, 1 year Personal subscription to GoToMyDevices or 90 Day Professional Upgrade (if existing customer), '30-Day Satisfaction Guarantee'. Optional sensors, voice or GSM modem & GoToMyDevices upgrades available.

6 Reasons To Monitor IT & Facility Environments



1) Know Immediately If And When Problems Arise

Knowing what happens on a timely basis is the most important part of managing and responding appropriately, whether protecting people, product or processes.

2) Reduce Or Eliminate Downtime

Organizations of all types and sizes must remain online and operating to be relevant. In today's world, being offline leads people to do business elsewhere.

3) Maintain Maximum Energy And Resource Efficiency

Equipment and processes consume resources that cost money. The difference between profitability and going out of business can often be traced to efficiency.

4) Protect And Extend The Life Of Equipment, Product And Property

Whether managing IT equipment, consumable goods or the structure housing a business, getting maximum use and life out of valuable resources is vital.

5) Maximize Reliability For Users And Peace-Of-Mind For Managers

All organizations have people that depend on and manage resources that make business possible. High dependability increases productivity and reduces stress.

6) Stay Online And Open For Business

If a business goes offline internally or externally, people and processes are immediately interrupted. When this occurs, business stops and customers move on.

...

When seeking to protect your organization, consider the market leader. In business since 1988, AVTECH's Room Alert monitors now protect organizations across 181 countries, on Antarctica and in space. They help save billions of dollars in losses each year and in some cases the organization itself. Call an AVTECH Product Specialist or a professional AVTECH reseller today about Room Alert and protect your facility against the invisible hand of *Mother Nature*.

Order through your favorite reseller, direct from AVTECH or online at EnvironmentMonitor.com

What are Digital vs Switch Sensors?

Digital Sensors are those that monitor in real-time to provide digital values that can be viewed through a web or application interface, passed in alert notifications or logged for creating charts and graphs. Common digital sensors include Temperature, Outdoor Temperature, Fluid Temperature, and Temperature & Humidity.

Switch Sensors are those that do not provide real-time values and instead present their real-time status as being in or out of a specific state (i.e. on / off, make / break, open / closed). These sensors have a built-in circuit that changes status as a threshold is passed, indicating an alarm condition.

\$40
BEST SELLER

Digital Temperature Sensor



TMP-SDT-SEN (\$40)
TMP-DT50-SEN (\$55)
TMP-DT100-SEN (\$80)

- Real-time temperature sensor.
- Temperature range: -67 – 257° F, -55 – 125° C.
- Compatible with Room Alert 32E/W, 26E/W, 24E, 12E, 11E, 7E, 4E, 3E, 3W, TemPageR 4E & 3E, 3W, WiSH & WiSPR.
- Options include sensor with attached cables of 25', 50' and 100' length. Max cable distance is 100'.

INCLUDES: Digital Temperature Sensor With 25' RJ-11 Cable & Installation Note.

\$55
OUTDOOR

Digital Outdoor Temperature Sensor



TMP-DOT-SEN (\$55)
TMP-DOT50-SEN (\$70)
TMP-DOT100-SEN (\$95)

- Real-time temperature sensor.
- Temperature range: -67 – 257° F, -55 – 125° C.
- Silicon coating offers extra resilience for monitoring outdoors or in other harsh environments.
- Compatible with Room Alert 32E/W, 26E/W, 24E, 12E, 11E, 7E, 3E, 3W, TemPageR 4E & 3E, WiSH & WiSPR.
- Options include sensor with attached cables of 25', 50' and 100' length. Max cable distance is 100'.

INCLUDES: Digital Outdoor Temperature Sensor With 25' RJ-11 Cable & Installation Note.

\$90
LAB READY

Digital Fluid Temperature Sensor



TMP-DFT-SEN (\$90)
TMP-DFT50-SEN (\$105)
TMP-DFT100-SEN (\$130)

- Real-time fluid temperature sensor.
- Temperature range: -67 – 257° F, -55 – 125° C.
- Perfect for cooler or freezer monitoring of food, medicines and fluid temperature.
- Compatible with Room Alert 32E/W, 26E/W, 24E, 12E, 11E, 7E, 4E, 3E, 3W, TemPageR 4E & 3E, WiSH & WiSPR.
- Options include sensor with attached cables of 25', 50' and 100' length. Max cable distance is 100'.

INCLUDES: Digital Fluid Temperature Sensor With 25' RJ-11 Cable & Installation Note.

\$90
BEST SELLER

Digital Temperature & Humidity Sensor



RMA-DTH-SEN (\$90)
RMA-DTH50-SEN (\$105)
RMA-DTH100-SEN (\$130)

- Real-time temperature and humidity sensor.
- Temperature range: -67 – 257° F, -55 – 125° C.
- Relative humidity range: 5 to 95% non-condensing.
- Compatible with Room Alert 32E/W, 26E/W, 24E, 12E, 11E, 4E, 3E, 3W, WiSH & WiSPR.
- Options include sensor with attached cables of 25', 50' and 100' length. Max cable distance is 100'.

INCLUDES: Digital Temperature & Humidity Sensor With 25' RJ-11 Cable & Installation Note.

\$90

Digital Temperature & Analog Sensor



RMA-DTA-SEN

- Real-time temperature and analog sensor port.
- Temperature range: -67 – 257° F, -55 – 125° C.
- Outputs 0 - 5VDC in real-time to analog sensor.
- By connecting an external analog sensor, such as a Current Loop, the user can track efficiency.
- Max sensor cable distance up to 100', includes 25'.
- Compatible with Room Alert 32E/W, 24E, 12E, 4E & 3E

INCLUDES: Digital Temperature & Analog Sensor With 25' RJ-11 Cord & Installation Note.

\$55
BEST SELLER

Main Power Sensor



RMA-PS1-SEN

- Real-time main power on/off status.
- Monitors main, UPS or single phase power.
- Max sensor cable distance up to 900', includes 25'.
- Compatible with Room Alert 32E/W, 26E/W, 24E, 12E, 11E, 7E, 4E, 3E, 3W, WiSH & WiSPR.

INCLUDES: Main Power Sensor With 25' Cable, 5V Power Adapter & Installation Note.

\$120

Mini UPS & Power Sensor (MUPS)



RMA-MUPS-SEN

- Real-time main power on/off status.
- Monitors main, UPS or single phase power.
- Provides battery backup power for 15 minutes or more for any 5V device.
- Max sensor cable distance up to 900', includes 25'.
- Plugs in-line with AVTECH's 5V Power Adapter.
- Compatible with Room Alert 32E/W, 26E/W, 24E, 12E, 11E, 7E, 4E, 3E, 3W, WiSH & WiSPR.

INCLUDES: Mini UPS & Power Sensor With 25' Cable & Installation Note.

* More Sensors, Cameras, Packages & Accessories Online.

\$255
BEST SELLER

Flood Sensor w/8' Cable



RMA-F008-SEN

- Real-time recognition of water/flood anywhere along the length of the patented flood cable.
- 8' Flood Cable with 25' RJ-11 leader cable.
- Alert triggered when sensor is activated or power lost.
- Flood cable can be extended by 8' lengths.
- Compatible with Room Alert 32E/W, 26E/W, 24E, 12E, 11E, 7E, 4E, 3E, 3W, WiSH & WiSPR.

* Custom flood cable lengths are available as a special order.

INCLUDES: Flood Sensor With 8' Flood Cable & 25' RJ-11 Leader Cable, 25' Sensor Cable, 5V Power Adapter, Mounting Screws & Installation Note.

\$125

Flood Sensor 8' Cable Extension



RMA-008CE-SEN

- Real-time recognition of water/flood anywhere along the length of the patented flood cable.
- Can be extended by adding additional 8' extensions.
- Designed to extend the length of the AVTECH Flood Sensor Cable to several hundred feet.
- **Requires connection in-line between AVTECH's Flood Sensor (internal on Room Alert 26E/W) and Flood Sensor Cable.**

INCLUDES: 8' Flood Cable Extension & Installation Note.

\$380
BEST VALUE

Flood Sensor w/24' Cable



RMA-F024-SEN

- Real-time recognition of water/flood anywhere along the length of the patented flood cable.
- 24' Flood Cable with 25' RJ-11 leader cable.
- Alert triggered when sensor is activated or power lost.
- Flood cable can be extended by 8' lengths.
- Compatible with Room Alert 32E/W, 26E/W, 24E, 12E, 11E, 7E, 4E, 3E, 3W, WiSH & WiSPR.

* Custom flood cable lengths are available as a special order.

INCLUDES: Flood Sensor With 24' Flood Cable & 25' RJ-11 Leader Cable, 25' Sensor Cable, 5V Power Adapter, Mounting Screws & Installation Note.

\$205
HEAVY DUTY

Flood Sensor (Spot)



RMA-FS2-SEN

- Real-time recognition of flood/water under pod.
- Specially designed to interface with Room Alert.
- Powered by 9V Alkaline battery (included).
- Max sensor cable distance up to 900', includes 25'.
- Compatible with Room Alerts 32E/W, 26E/W, 24E, 12E, 11E, 7E, 4E, 3E, 3W, WiSH & WiSPR.

INCLUDES: Flood Sensor (Spot) With 25' Cable, 9V Alkaline Battery & Installation Note.

\$275

Extreme Low Temperature Sensor



RMA-ET1-SEN

- Real-time low extreme temperature sensor.
- Temperature range: -328° – 32° F, -200° – 0° C
- Analog, 1-5 VDC.
- Sensor standardization Dn IEC 751 Class B.
- Compatible with Room Alert 32E/W, 12E & Digital Temperature & Analog Sensor.

INCLUDES: Extreme Temperature Sensor (High or Low), 10' Thermocouple Coil, 18V Power Adapter, 25' Speaker Wire Cable & Installation Note.

\$275

Extreme High Temperature Sensor



RMA-ET2-SEN

- Real-time high extreme temperature sensor.
- Temperature range: -40° – 743° F, -40° – 395° C
- Analog, 1-5 VDC.
- Sensor standardization Dn IEC 751 Class B.
- Compatible with Room Alert 32E/W, 12E & Digital Temperature & Analog Sensor.

INCLUDES: Extreme Temperature Sensor (High or Low), 10' Thermocouple Coil, 18V Power Adapter, 25' Speaker Wire Cable & Installation Note.

\$85

Current Loop 1 (0-50A)



RMA-CL1-SEN

- Monitors electrical current flowing through a single-phase powered cable.
- Monitor output: 0-10A, 0-20A & 0-50A.
- Connects via Room Alert Analog Sensor Port or Digital Temperature & Analog Sensor.
- Operates in 0 - 95% RH, non-condensing environment.
- Low-voltage 2-wire cable connection.
- Compatible with Room Alert 32E/W, 12E & Digital Temperature & Analog Sensor.

INCLUDES: Current Loop 1 With 25' Cable, Mounting Screws & Installation Note.

\$85

Current Loop 2 (0-250A)



RMA-CL2-SEN

- Monitors electrical current flowing through a single-phase powered cable.
- Monitor output: 0-100A, 0-200A & 0-250A.
- Connects via Room Alert Analog Sensor Port or Digital Temperature & Analog Sensor.
- Operates in 0 - 95% RH, non-condensing environment.
- Low-voltage 2-wire cable connection.
- Compatible with Room Alert 32E/W, 12E & Digital Temperature & Analog Sensor.

INCLUDES: Current Loop 2 With 25' Cable, Mounting Screws & Installation Note.

* More Sensors, Cameras, Packages & Accessories Online.

\$195

Water Tank Level Sensor



RMA-WTL1-SEN (NC)
RMA-WTL2-SEN (NO)

- Real-time recognition of water level rise or fall past an established level. Use to indicate leaks, flooding or need to refill water tank.
- Max sensor cable distance up to 900', includes 25'.
- Available in Normally Closed (NC) and Normally Open (NO) models.
- Compatible with Room Alert 32E/W, 26E/W, 24E, 12E, 11E, 7E, 4E, 3E, 3W, WiSH & WiSPR.

INCLUDES: Water Tank Level Sensor With 25' Cable & Installation Note.

\$225

Fuel Tank Level Sensor



RMA-FTL1-SEN (NC)
RMA-FTL2-SEN (NO)

- Real-time recognition of fuel level rise or fall past an established level. Use to indicate leaks, overflow or need to refill fuel tank.
- Max sensor cable distance up to 900', includes 25'.
- Available in Normally Closed (NC) and Normally Open (NO) models.
- Compatible with Room Alert 32E/W, 26E/W, 24E, 12E, 11E, 7E, 4E, 3E, 3W, WiSH & WiSPR.

INCLUDES: Fuel Tank Level Sensor With 25' Cable & Installation Note.

\$40

BEST SELLER

Air Flow 1 Sensor (NC)



RMA-AF1-SEN

- Real-time recognition of air flow stop/start.
- Use in HVAC duct, under raised floors, or near fan.
- Max sensor cable distance up to 900', includes 25'.
- Recommended for IT installations.
- Compatible with Room Alert 32E/W, 26E/W, 24E, 12E, 11E, 7E, 4E, 3E, 3W, WiSH & WiSPR.

INCLUDES: Air Flow 1 Sensor (Normally Closed) With 25' Cable & Installation Note.

\$40

Air Flow 2 Sensor (NO)



RMA-AF2-SEN

- Real-time recognition of air flow stop/start.
- Use in HVAC duct, under raised floors, or near fan.
- Max sensor cable distance up to 900', includes 25'.
- Compatible with Room Alert 32E/W, 26E/W, 24E, 12E, 11E, 7E, 4E, 3E, 3W, WiSH & WiSPR.

INCLUDES: Air Flow 2 Sensor (Normally Open) With 25' Cable & Installation Note.

\$45

Motion Sensor



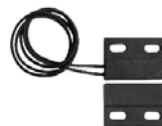
RMA-MOT2-SEN

- Detect motion up to approximately 35' with 84° angle.
- Alert triggered when sensor is activated.
- Powered by 12V power adapter (included).
- Max sensor cable distance up to 900', includes 25'.
- Compatible with Room Alert 32E/W, 26E/W, 24E, 12E, 11E, 7E, 4E, 3E, 3W, WiSH & WiSPR.

INCLUDES: Motion Sensor With 25' Cable, 12V Power Adapter & Installation Note.

\$25

Room Entry Sensor



RMA-RE1-SEN

- Easy recognition of door/cabinet open or closed status.
- Standard use on door or window and adjoining frame.
- Max sensor cable distance up to 900', includes 25'.
- Compatible with Room Alert 32E/W, 26E/W, 24E, 12E, 11E, 7E, 4E, 3E, 3W, WiSH & WiSPR.

INCLUDES: Room Entry Sensor With 25' Cable & Installation Note.

\$225

HEAVY DUTY

Panic Button 1



RMA-PB1-SEN

- Designed to be used as an emergency alarm to provide warning where someone is working and may need help or conditions reach an alarm state.
- Palm or foot size, locks in place, pull to release.
- NEMA rated for weather and industrial use.
- Compatible with Room Alert 32E/W, 26E/W, 24E, 12E, 11E, 7E, 4E, 3E, 3W, WiSH & WiSPR.

INCLUDES: Panic Button 1 With 25' Cable & Installation Note.

\$75

Smoke Sensor w/Escape Light



RMA-SS1-SEN

- Real-time recognition of smoke or fire.
- Audible alert and 'escape' light is triggered when sensor is activated due to smoke or fire.
- Powered by 9V Alkaline battery (included).
- Max sensor cable distance up to 900', includes 25'.
- Compatible with Room Alert 32E/W, 26E/W, 24E, 11E, 7E, 4E, 3E, 3W, WiSH & WiSPR.

INCLUDES: Smoke Sensor w/Escape Light, 25' Cable, 9V Alkaline Battery, Mounting Screws & Installation Note.

* More Sensors, Cameras, Packages & Accessories Online.

\$285
POPULAR

Light Tower w/Audio **



ST-RYG-LT

- Light Tower lights turn on when alarms are detected (i.e. pings fail, high temps, room entry, etc.).
- Lights turn on/off via SNMP set, URL & interactively via AVTECH's Device ManageR software.
- Adjustable audio alarm with intensity range of 0 to 95 dB (at 1m).
- Includes 15' Light Cable; 25' Extension Cable available.
- **Compatible with Room Alert 4E directly.**
- **Compatible with Room Alert 32E/W, 12E & 3E using an LT-32-ADP adapter.**

INCLUDES: Light Tower w/Audio, Red, Yellow & Green Lights, 15' Cable, Mounting Bracket & Installation Note.

\$145

Relay Switch Sensor (Low Voltage) **



RMA-RELAY-SEN

- Allows low voltage devices to be turned on/off.
- Three (3) device relays with visible relay status lights.
- One (1) general alarm relay for connection to alarm panel/box.
- Each relay supports 0.3A at 125VAC or 1A at 24VDC.
- **Compatible with Room Alert 4E directly.**
- **Compatible with Room Alert 32E/W, 12E & 3E using an LT-32-ADP adapter.**

INCLUDES: Relay Switch Sensor With 25' Cable & Installation Note.

\$75

25' Light Tower w/Audio Extension



ST-025G2-CAB

- Designed to extend the length of AVTECH's Light Tower w/Audio.
- Can be extended by adding additional 25' extensions. Maximum extension length is 100'.
- Requires a connection in-line between AVTECH's Light Tower w/Audio and Room Alert 32E/W, or 4E environment monitors.
- Compatible with Light Tower w/Audio ONLY.

INCLUDES: 25' Light Tower Extension Cable & Installation Note.

\$65

Light Tower & Relay Adapter **



LT-32-ADP

- **Required to connect the Light Tower, Light Tower w/Audio or Relay Switch Sensor to AVTECH's Room Alert 32E/W, 12E or 3E.** Allows Light Tower, Light Tower w/Audio or Relay Switch Sensor installs up to 100' away from Room Alert ID box via RJ-11.
- Includes one (1) relay that can be used to turn on/off low voltage devices automatically in response to an alarm condition and separate 5V power supply.
- The relay supports 0.3A at 125VAC or 1A at 24VDC.

INCLUDES: Light Tower & Relay Adapter, 25' RJ-11 Cable, 5V Power Adapter & Installation Note.

\$175
BEST SELLER

GSM Modem w/USB Connect



MOD-GSM-1

- Immediate connectivity to any GSM/GPRS network.
- Controlled via AT commands.
- Use with AVTECH's Dial Out Plugin and Device ManageR software to trigger modem to dial out to any GSM network and send your alert generated by Room Alert or Axis camera.
- **Requires PC with USB.**
- Compatible with AVTECH's Device ManageR.

INCLUDES: AirLink GL 6110 GSM Modem w/USB Connect, 8' USB Connection Cable, FME Antenna & Installation Note.

\$45

Voice Modem w/USD Connect



MOD-VCE-2

- 56K Phone/Internet/Fax modem that connects computers to the internet using a dialup connection.
- Use with AVTECH's Dial Out Plugin and Device ManageR software to trigger modem to dial a phone and send or speak text when an alert is generated from any Room Alert or Axis camera.
- Max sensor cable distance up to 900', includes 25'.
- **Requires PC with USB.**
- Compatible with AVTECH's Device ManageR.

INCLUDES: 56K USB Phone/Internet/Fax Modem, Installation CD & Installation Note.

\$70

Power Over Ethernet Active Splitter



POE-ADP-01

- Allows easy integration of Power over Ethernet (PoE) for a non PoE enabled Room Alert monitor.
- Use with a non PoE Room Alert monitor on a PoE enabled network.
- Active Splitter supports 10/100BaseT.
- Compatible with Room Alert 26E/W, 24E, 11E, 7E, 4E, TemPageR 4E & 3E.

INCLUDES: PoE Ethernet Active Splitter (5V, RoHS), 2 Adapter Cables & Installation Note.

\$70

Power Over Ethernet Midspan Injector



POE-INJ-01

- Allows easy integration of Power over Ethernet (PoE) for a PoE enabled Room Alert monitor.
- Use in-line with a PoE powered Room Alert monitor when a network is not PoE enabled.
- Midspan Injector supports 10/100BaseT.
- Compatible with Room Alert 32E/W, 12E & 3E

INCLUDES: PoE Midspan Injector (5V, RoHS), Power Cable & Installation Note.

* More Sensors, Cameras, Packages & Accessories Online.

** Room Alert 32E/W, 12E & 3E require use of LT-32-ADP.

How To Purchase AVTECH Products

AVTECH products are available for purchase around the world and used in 181 countries. You can purchase through your favorite reseller, direct from AVTECH, or online through our store. When ordering * from AVTECH, we are happy to accept your organization's purchase order (PO), as well as payment via credit card or wire transfer. Most orders ship the same or next business day.

Resellers: Order Through Your Favorite Reseller - Ask them to contact AVTECH on your behalf. AVTECH has an established and professional network of Resellers world-wide and can set up new Resellers quickly.

Phone: 888.220.6700 / 401.628.1600 (9-5 EST) - Call AVTECH direct and ask to speak with a "Product Specialist". They can take your order by phone for immediate processing or provide you with an immediate PDF quote by email. If you are outside of the U.S.A. or Canada, please ask to speak with an "International Product Specialist" as they can address international shipping and customs concerns.

Website: EnvironmentMonitor.com (Anytime) - Place your order online at anytime through the AVTECH store for immediate processing. International money rates are available online to view pricing and make payment in your local currency. Combination and volume packages are available on our store.

Email: Orders@AVTECH.com (Anytime) - Send your organization's purchase order (PO), completed and scanned quote form or order instructions to AVTECH via email. We prefer to receive POs in PDF format although can accept Word and Excel formats if necessary. Other file formats are not accepted.

Fax: 401.628.1601 (Anytime) - Send your purchase order (PO), completed quote form or order instructions to AVTECH via fax at any time. Faxes are received in a secure facility.

* NOTE: International orders ship when payment in U.S.D. is received. Wire transfer or credit card payment is preferred. Checks must be in U.S.D., include a U.S. routing code, and drawn on a U.S. bank. Thank you.

Extended Service & Support

GoToMyDevices is AVTECH's online venue for customers worldwide that work with Room Alert monitors and includes all of AVTECH's options for extended service and support. It will allow:

- AVTECH's 30 Day Satisfaction Guarantee on new purchases
- Coverage under AVTECH's hardware Limited Warranty service
- Download access to licensed firmware, software & MIBs
- Access to U.S. based technical support services
- Access to your product specialist or reseller
- Tracking of order shipments from fulfillment to delivery location
- Subscription setup and ongoing management
- Management of your contact and billing information

During your active GoToMyDevices service period, AVTECH will make all of the above available to the subscriber and those people they share their service with. However, GoToMyDevices is more than just a source for downloads, technical support and managing your account. It includes AVTECH's advanced cloud solution for monitoring of Room Alert devices... the world's most popular IT & facilities environment monitors. GoToMyDevices cloud monitoring enables anyone to use Room Alert monitors, regardless of their skill level or technical capabilities. Even better, users enjoy the same look and feel from any mobile device, whether they use a phone, tablet, laptop or desktop computer. Check it out and see for yourself why many of the worlds leading corporations call it, "the best management platform of its class." GoToMyDevices lets you monitor, alert, log, graph, view, report, map, manage and protect. Proactively monitor your facility from anywhere with GoToMyDevices.

Technical Support services are available 9-5 EST Monday through Friday. The best way to start a support request is by opening a ticket online at GoToMyDevices.com.

Cloud: GoToMyDevices.com **Email:** Support@AVTECH.com

Website: AVTECH.com/Support

AVTECH products are proudly 'Made In The U.S.A.' since 1988.

Contact Us

AVTECH Software, Inc.
16 Cutler Street, Cutler Mill
Warren, RI 02885-2761 USA

Sales: 888.220.6700
Phone: 401.628.1600
Fax: 401.628.1601

Visit Us & Our Store

AVTECH.com
RoomAlert.com
GoToMyDevices.com
EnvironmentMonitor.com
Most Orders Ship the Same or Next Business Day

Trademarks

© Copyright 1988-2016
AVTECH Software, Inc.
All Rights Reserved Worldwide.
AVTECH, AVTECH Software
AVTECH.com, AVTECHSoftware.com,
Device ManageR, EnvironmentMonitor.com,
'Environment Monitoring Made Easy!'
GoToMyDevices.com, 'Protect Your
Facility... Don't Wait Until It's Too Late!'
Room Alert, RoomAlert.com, WiSH, WiSPR,
TemPageR & TemPageR.com.

Privacy Promise

AVTECH does not sell or share your email or other contact information. However, AVTECH uses email marketing because our prospects and customers consider it important and convenient. When we do, AVTECH provides customers with an easy means to decline further email of that type.

Current Versions

To confirm your organization is running current software and firmware versions or to download these for any AVTECH product under current extended service & support, visit www.GoToMyDevices.com, log in and click on the 'Downloads' button.

Tell Us Your Story

We truly want to know when we do well and when we miss expectations. Working to provide the best products and services means making changes that typically succeed and sometimes fall short. Please email us your feedback at Feedback@AVTECH.com.
Thank you.