

# Cable Cleat Products for Short Circuit Protection

Panduit's CCSSTR series is the newest addition to Panduit's cable cleat offering for robust cable management and short circuit protection. Available in a variety of sizes, these solutions ensure cables remain contained in the event of a short circuit fault, minimizing disruption and damage to personnel and property. Panduit's Cable Cleat Products for short circuit protection are designed to perform in a wide range of harsh environments, including industries such as Oil and Gas, Power Generation, Mining, and Shipbuilding.



## FEATURES (Benefits):

- Easy Installation (Intuitive design for single tool tightening)
- Removeable Spacer (Range taking up to 7mm)
- Bracket Slot (Providing options for installer)
- 316L Stainless Steel (Suitable for harsh environments)
- IEC 61914:2015 Tested (Independent 3rd Party Lab)

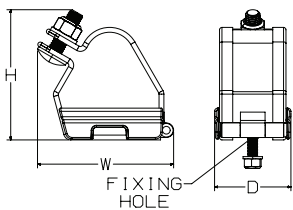
## Technical Specifications & Testing Results

<b>Design Specification</b>	IEC 61914:2015
<b>Classification</b>	Composite SDSS - Standard Duty Stainless Steel IEC 61914:2015 Clause 6.1.3
<b>Temperature for permanent application</b>	-40°C to +60°C IEC 61914:2015 clause 6.2
<b>Needle Flame Test</b>	PASS IEC 61914:2015 clause 10.1
<b>Lateral Load Test</b>	PASS IEC 61914:2015 clause 9.3
<b>Axial Load Test</b>	PASS IEC 61914:2015 clause 9.4
<b>Impact Resistance</b>	PASS - Very Heavy IEC 61914:2015 clause 6.3, 6.3.5, 9.2
<b>Material</b>	316/316L Stainless Steel Spacer is Low Smoke Halogen Free (LSHF)

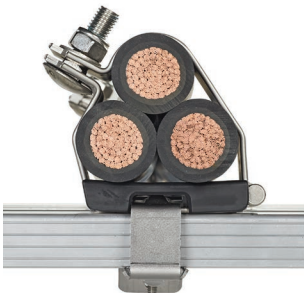
## Short Circuit Testing Summary<sup>1</sup>

Trefoil Formation 38mm Cable Diameter	Trefoil Formation 38mm Cable Diameter	Trefoil Formation 35mm Cable Diameter	Trefoil Formation 38mm Cable Diameter
One Short Circuit Event (Clause 6.4.4) 300mm spacing	Two Short Circuit Events (Clause 6.4.5) 300mm spacing	One Short Circuit Event (Clause 6.4.4) 600mm spacing	Two Short Circuit Events (Clause 6.4.5) 600mm spac
0.1 sec	0.1 sec	0.1 sec	0.1 sec
172 kA Peak	162 kA Peak	143 kA Peak	125 kA Peak
8926 lbs force (39.7 kN)	7919 lbs force (35.2 kN)	13398 lbs force (59.5 kN)	9429 lbs force (41.9 kN)

<sup>1</sup>Test compliance to IEC 61914:2015 utilizing KEMA facility; Independent, ISO 17025 accredited testing, inspection, and certification services (IEEE, IEC, UL, and ANS) for electric power equipment

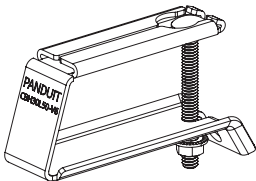


Cable Cleat Products Range Table



	Cable Range (mm)		Dimensions (mm)					
Part Number	Min Dia.	Max Dia.	H	W	D	Mounting Holes	Weight (g)	
CCSSTR2025	20	25	87	86	63	1 x M8	417	
CCSSTR2328	23	28	91	90	63	1 x M8	439	
CCSSTR2632	26	32	95	97	63	1 x M8	480	
CCSSTR3036	30	36	100	105	63	1 x M8	518	
CCSSTR3440	34	40	108	111	63	1 x M8	547	
CCSSTR3844	38	44	108	119	63	1 x M8	581	
CCSSTR4248	42	48	112	126	63	1 x M8	613	
CCSSTR4652	46	52	117	133	63	1 x M8	647	
CCSSTR5057	50	57	123	143	63	1 x M8	686	
CCSSTR5461	54	61	130	150	63	1 x M8	720	
CCSSTR5865	58	65	138	157	63	1 x M8	754	
CCSSTR6269	62	69	145	165	63	1 x M8	782	

**Note:** Alternative fault levels, fixing spacings, and custom alternatives can be offered. Please contact our Sales Team for further information.



Cable Cleat Brackets



Part Number	Description	Height	Length
CBH15L50-V6	Metal Rung Bracket (with closure bolt).	15 mm	50 mm
CBH20L50-V6	Metal Rung Bracket (with closure bolt).	20 mm	50 mm
CBH25L50-V6	Metal Rung Bracket (with closure bolt).	25 mm	50 mm
CBH30L50-V6	Metal Rung Bracket (with closure bolt).	30 mm	50 mm

**Note:** Alternative sizes available upon request. Please contact our Sales Team for further information.